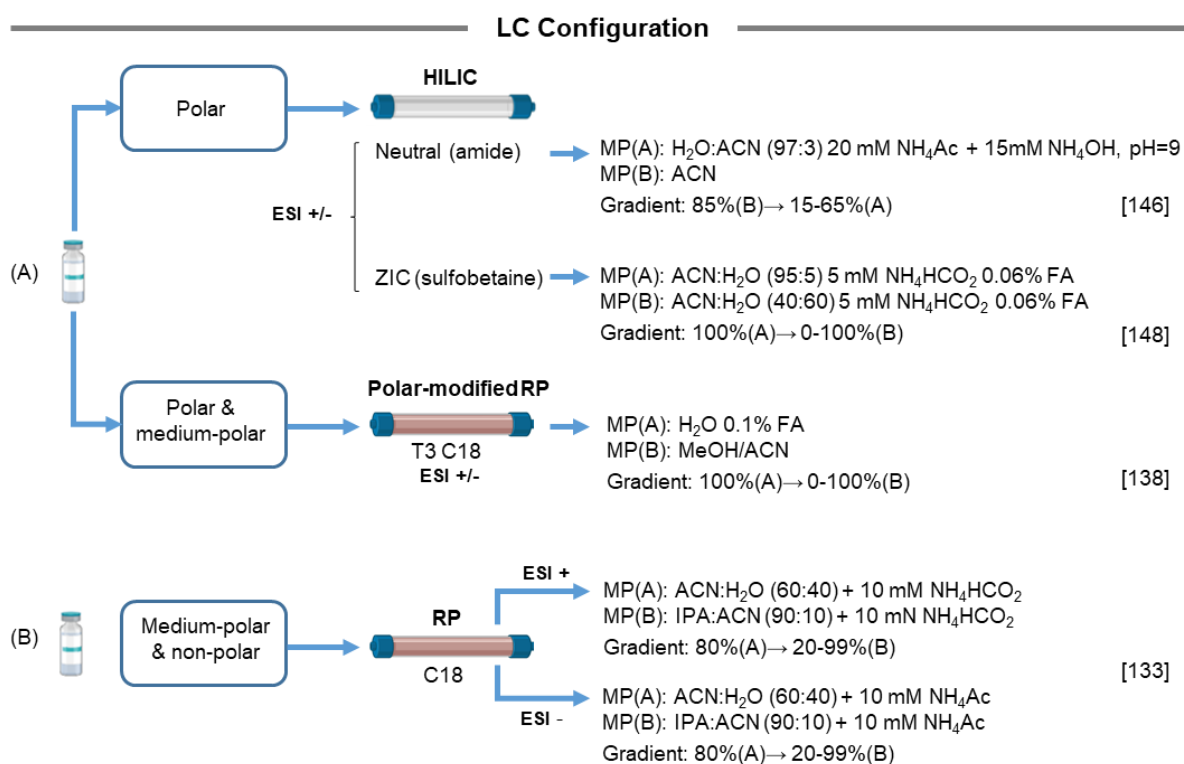
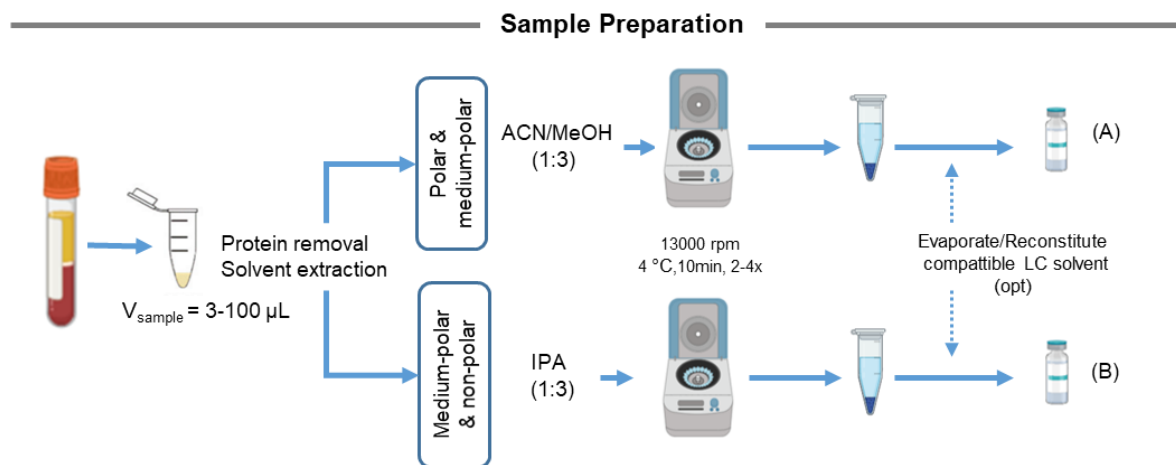


Figure S5. Recommended protocol and technical aspects for serum/plasma

SERUM/PLASMA



Metabolome coverage

ESI	HILIC (Log P < 1)	RP modified (-3 < Log P < 7)	RP (Log P > -1)
+	284 metabolites: heterocyclic comp., aas, benzenoids, carbohydrates, amines, acylcarnitines...	707 metabolites: heterocyclic comp., benzenoids, acylcarnitines, sterpoids, aas, amines...	640 metabolites: heterocyclic comp., aas, benzenoids, steroids, phospholipids, organic oxygen...
-	56 metabolites: aas, carboxylic acids, FAs, carbohydrates...	146 metabolites: FAs, ecosanoids, phospholipids, BAs, organic oxygen, carbohydrates...	139 metabolites: FAs, ecosanoids, phospholipids, BAs, organic acids...
+/-	327 metabolites: aas, heterocyclic comp., nucleotides, benzenoids, carbohydrates...	584 metabolites: heterocyclic comp., aas, benzenoids, FAs, sterpoids, BAs...	468 metabolites: heterocyclic comp., benzenoids, FAs, BAs, steroids, phospholipids, organic acids, flavonoids...

aas: amino acids; FAs: fatty acids; BAs: bile acids

Tips

- Standard collection and storage methodologies have to be performed for pre-processing plasma and serum to ensure homogeneity in the procedure (tubes, preservatives, time and temperature) before sample preparation.
- Centrifuge as many times as necessary to ensure protein precipitation.