

Innovation in Health



UK-Spain Bilateral Seminar



09
02
18

Roundtable: *Models of Innovation in Health in the UK*

Siôn Charles

Deputy Director, Bevan Commission & Bevan Commission Academy

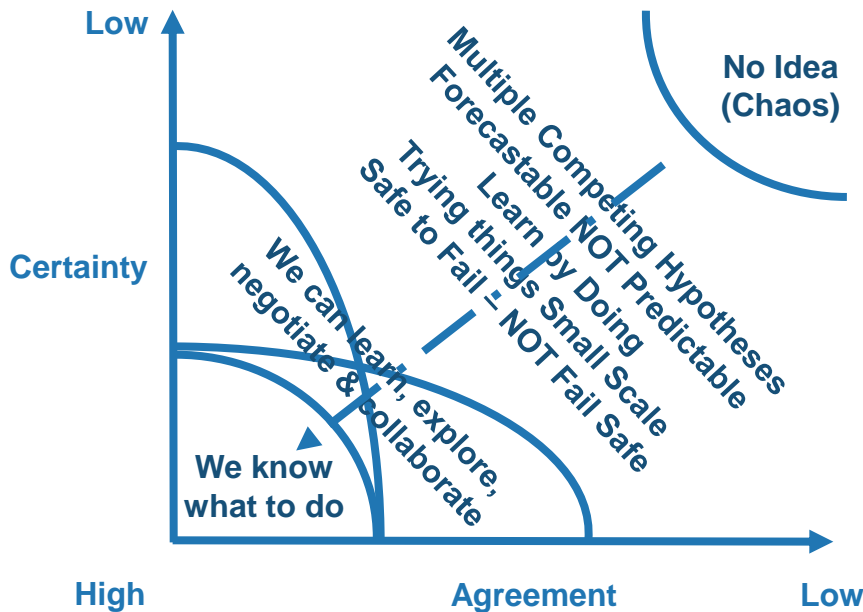
About Institution

The Bevan Commission is an independent think tank made up of international experts who are working to help create a health & care system *fit for the future* . . .

- ✓ Established in 2008 to observe, interpret, analyse, scrutinise, advise and comment on health-related matters in Wales and beyond
- ✓ Supported Welsh Government health ministers by providing guidance and counsel
- ✓ 24 Commissioners & small administration team



Models of Innovation



Bevan Innovators:

- Innovation Exemplars
- Health Technology Exemplars
- Fellows
- Advocates
- Innovation Hubs (x10)

Collaborators



Achievements

| | |
|------------|--|
| 71 | projects supported (plus another 43 projects this year) |
| 87 | health staff participating |
| 27 | projects collaborating with industry |
| 67% | success Rate – comparison anticipated change project success rate 30% (Berwick & Ham) |
| 1:5 | £ return on investment for Welsh Government |
| £69,000 | average economic benefit per project (Cohort 1 data only) |
| Increased | leadership capability, skills, confidence to manage change reported by participants |
| Success | attributed by participants to the support received from the Bevan Commission |
| Innovation | stimulated increased across the NHS |
| Awards | for Innovation, Collaboration, Improvement Prudent Healthcare and Excellence in Patient Care |
| Capability | developed in systems and complexity thinking, change management, appreciative inquiry and project management |

Future Challenges

Increasing Collaboration

(Bevan Commission, Health, Private Sector, Academia)

Making it Stick

Health Hack – March

Gadget Hack – May

International Conference – July